



2019 NASSAU CUP OCEAN RACE

OFFICIAL SAILING INSTRUCTIONS

1.0 RULES GOVERNING THE RACE:

1.1 The Race will be governed by the *Rules* as defined in the current *Racing Rules of Sailing (Rules)*, the International Regulations for Preventing Collisions at Sea (COLREGS), the PHRF of Southeast Florida Rules & Regulations, the Notice of Race and the Sailing Instructions, including any properly posted amendments or addendums to the above.

1.2 In case of conflict between the Notice of Race and the Sailing Instructions the Sailing Instructions shall prevail. (This changes rule 63.7.)

1.3 Only U.S. Sailing Prescriptions to RRS 61.4, 67, 70.5(a), and 76.1 apply.

1.4 A boat may carry one more spinnaker than shown on her current rating certificate of area not greater than rated SPA without an increase in rating.
(This changes PHRF-SEF regulation 2D.)

2.0 SAFETY & EQUIPMENT:

2.1 All boats shall conform to the current International Sailing Federation Special Regulations Governing Offshore and Oceanic Equipment and Preparation, including US Sailing Prescriptions, Category 2 as amended in the Notice of Race. All competing boats shall carry hard copies of the appropriate NOAA charts covering the race course.

2.2 **SAFETY AT SEA:** Competitors are reminded they shall comply with the International Regulations for Preventing Collisions at Sea (COLREGS) when encountering vessels that are not racing.

3.0 NOTICES TO COMPETITORS:

3.1 At the Coral Reef Yacht Club the Official Notice Board will be located in the breezeway near the pool patio area of the club. Any signals made ashore shall be displayed on the flagpole on the eastern most part of the club property. At the Nassau Yacht Club notices to competitors will be located in the main hall of the NYC Clubhouse. Notices will also be posted on the race website at www.nassaucuprace.org.

4.0 STARTING LINE:

4.1 The Starting Line will be established in the vicinity approximately 1.2 miles northeast of the Miami Harbour entrance. The starting line will be between an inflatable race mark, and a staff on the Race Committee Signal Boat displaying an orange flag.

5.0 START:

5.1 First Warning signal is scheduled for 11:00 hours, Thursday, November 14th, 2019. The final Division/Class breaks for the Nassau Cup fleet will be published on or before November 13th, 2019, and distributed at the Skipper's Meeting.

5.2 Class Signals & Times are:

<u>DIVISION</u>	<u>WARNING SIGNAL COLOR</u>	<u>WARNING SIGNAL TIME</u>	<u>PREP. FLAG</u>	<u>PREP FLAG REMOVED</u>	<u>START SIGNAL</u>
ORC 1 & 2	YELLOW	11:00	11:01	11:04	11:05
PHRF	GREEN	11:05	11:06	11:09	11:10
MULTIHULL	BLUE	11:10	11:11	11:14	11:15

5.3 All boats shall check in with the Race Committee on station by sailing past the stern of the R/C Signal boat on Starboard tack and hailing their sail number. Any boat not starting within 10 minutes of her start time will be scored DNS (did not start) unless special permission to start at a later time has been obtained from the Race Committee on the Signal boat prior to the first Warning Signal.

6.0 RECALLS:

6.1 Recalls will be made in accordance with *Rule 29*. The Race Committee will endeavor to inform premature starters by hail on VHF channel 71. Failure to make or receive such a call will not relieve a boat of the responsibility to make a proper start. Any boat(s) starting prematurely and failing to properly re-start will be penalized 30 minutes elapsed time.

7.0 COURSE:

7.1 The course to be sailed shall be from the Start Line northeast of Miami Harbour entrance, to the Finish Line at the Northwest entrance to Nassau Harbour, leaving Great Isaac (including Northeast Rock and East Brother), and Great Stirrup to Starboard.

8.0 NIGHT SAILING:

8.1 Between the hours of local sunset and sunrise, if boats come within two of the longer boat's overall length of each other, both boats shall keep clear of each other.

9.0 FINISH LINE:

9.1 The Finish Line will be inside the northwest entrance of Nassau Harbour on a line running in a north-south direction (010° / 190° magnetic) between the Paradise Island Lighthouse (FL Ev 5 sec. 66ft 6m.) and the **second (2nd)** Red channel Buoy (FL R 4 sec) inside the southwest breakwater. **Appendix #1** of these Sailing Instructions depicts a sketch chart of the finish line area.

9.2 Approximately 5 miles out from the finish, boats are requested to call the Nassau Yacht Club Race Committee on VHF Channel 71 and provide the committee with the boat name and sail number and estimated finish time.

9.3 Boats should finish in an easterly direction crossing the finish line when the Paradise Island Lighthouse is at a bearing of 010 degrees magnetic leaving the 2nd Red channel buoy inside the southwest breakwater to starboard taking their finish time when crossing the bearing. Immediately after finishing, boats shall announce their sail number and recorded finish time to the Race Committee on VHF channel 71.

A Race Committee Boat displaying a blue flag should be on station in the vicinity of the 2nd Red channel buoy inside the southwest breakwater at the finish line to record finish times, but will not be a part of the finish line. Finish times taken by the Race Committee on station shall be official.

9.4 If there is no Race Committee present at the finish line when a boat is finishing, it is the responsibility of each boat to record their own finishing time. This should be done by announcing on VHF Channel 71 the boat name, sail number and finish time (GPS Eastern Standard time) when crossing a line bearing 010 degrees magnetic to the Paradise Island Lighthouse, leaving the 2nd Red channel buoy inside the southwest breakwater to starboard. Once ashore, a representative from the boat shall notify the Nassau Yacht Club Race Committee at the Nassau Yacht Club (or by phone to (242) 357-3959) of the boat's finish time. Boats intending to protest shall inform the Race Committee at the same time. (This changes *Rule 61*)

9.5 Competitors are reminded that commercial ship traffic has **Right of Way** in the Nassau Ship Channel at all times.

10.0 NIGHT FINISH:

10.1 Boats finishing at night shall shine a bright light on their sail numbers continuously from within 2 minutes of their finish until 1 minute after their finish and confirm their finish with the Nassau Yacht Club Race Committee on VHF channel 71 immediately after finishing.

11.0 RACE TRACKING:

11.1 Each boat is required to be equipped with a SPOT or Delorme In-Reach position transponder, be subscribed to the "Track Progress" option offered by SPOT or Delorme In-Reach, and provide the Race Committee with the "shared URL" for the purpose of inclusion in the official race tracking program. The unit shall be mounted and operated throughout the race in accordance with the instructions provided. Only the Race Committee may protest a boat for an alleged violation of this section. Tracking data may not be used as grounds for a protest.

12.0 TIME LIMIT:

12.1 The time limit for finishing the race will be 1100 hours on Saturday, November 16th, 2019. Any boats not finished by this time will be scored "DNF". (This changes *Rule 35*.)

13.0 RETIRING FROM THE RACE:

13.1 A boat retiring from the race for any reason must notify the Nassau Yacht Club Race Committee on VHF Channel 71 or by phone at (242) 357-3959 as soon as possible.

14.0 SCORING AND TIME ALLOWANCES

14.1 Appendix A, using the "Low Point" scoring system of the *Rules* shall be in effect.

14.3 For the **ORC**, **PHRF** and **MOCRA** divisions, a boats calculated Time on Time rating allowance will be applied as a factor of the boats elapsed time for the race.

15.0 PENALTIES FOR INFRACTIONS OF THE RULES PART 2:

15.1 The One and Two Turns Penalty, *Rule 44.2* **shall not apply**.

15.2 The Scoring Penalty, *Rules 44.3 (a)* shall apply. The penalty for accepting a penalty by displaying a yellow flag in accordance with *Rule 44.3 (a)* shall be one percent (1%) of a boat's elapsed time added to her corrected time. (This changes *Rule 44.3 (c)*.) A boat taking a scoring penalty shall report it to the Race Committee within the protest time limit.

15.3 Alternative Penalty: At the discretion of a Protest Committee, as an alternative to disqualification, the penalty assessed by the protest committee for an infraction of the *Rules Part 2*, or of these Sailing Instructions shall be no less than five (5) percent of a boat's elapsed time added to her corrected time. (This changes *Rule 64.1 (a)*.)

16.0 PROTESTS AND REQUESTS FOR REDRESS:

16.1 Protest forms will be available at the Nassau Yacht Club. Completed protest forms shall be delivered there no later than the protest time limit of 12:00 hours on Saturday, November 16th, 2019.

16.2 A notice will be posted on the official notice board at Nassau Yacht Club no later than 15 minutes after the protest time limit, to inform boats of hearings to which they are parties or named as witnesses.

16.3 Protest hearings will be held at the Nassau Yacht Club, and will begin as soon as possible after the protest time limit.

16.4 Notices of protests filed by the Race Committee or Protest Committee will be posted on the official notice board at the Nassau Yacht Club before the protest time limit to inform boats under rule 61.1(b).

17.0 DISCLAIMER OF LIABILITY:

17.1 Competitors participate in the Nassau Cup Ocean Race entirely at their own risk. See *Rule 4*, Decision to Race.

17.2 The SORC Inc., Coral Reef Yacht Club, Nassau Yacht Club, and Organizing Authority do not accept any liability for material damage or personal injury or death sustained in conjunction with, or prior to, during, or after the regatta.

18.0 AWARDS PARTY AND TROPHY PRESENTATION:

18.1 The awards party and trophy presentation will be held at the Nassau Yacht Club on Saturday, November 16th, beginning at 18:30 hours. Dress is Yacht Club Casual.

19.0 RACE CONTACTS:

Carol Ewing - Race Chairman
Phone: 305-785-4777 E-mail: Chair@nassaucuprace.org

In Miami – Race Headquarters

Coral Reef Yacht Club
2484 S. Bayshore Drive
Coconut Grove, FL 33133
Phone: 305-858-1733

OR

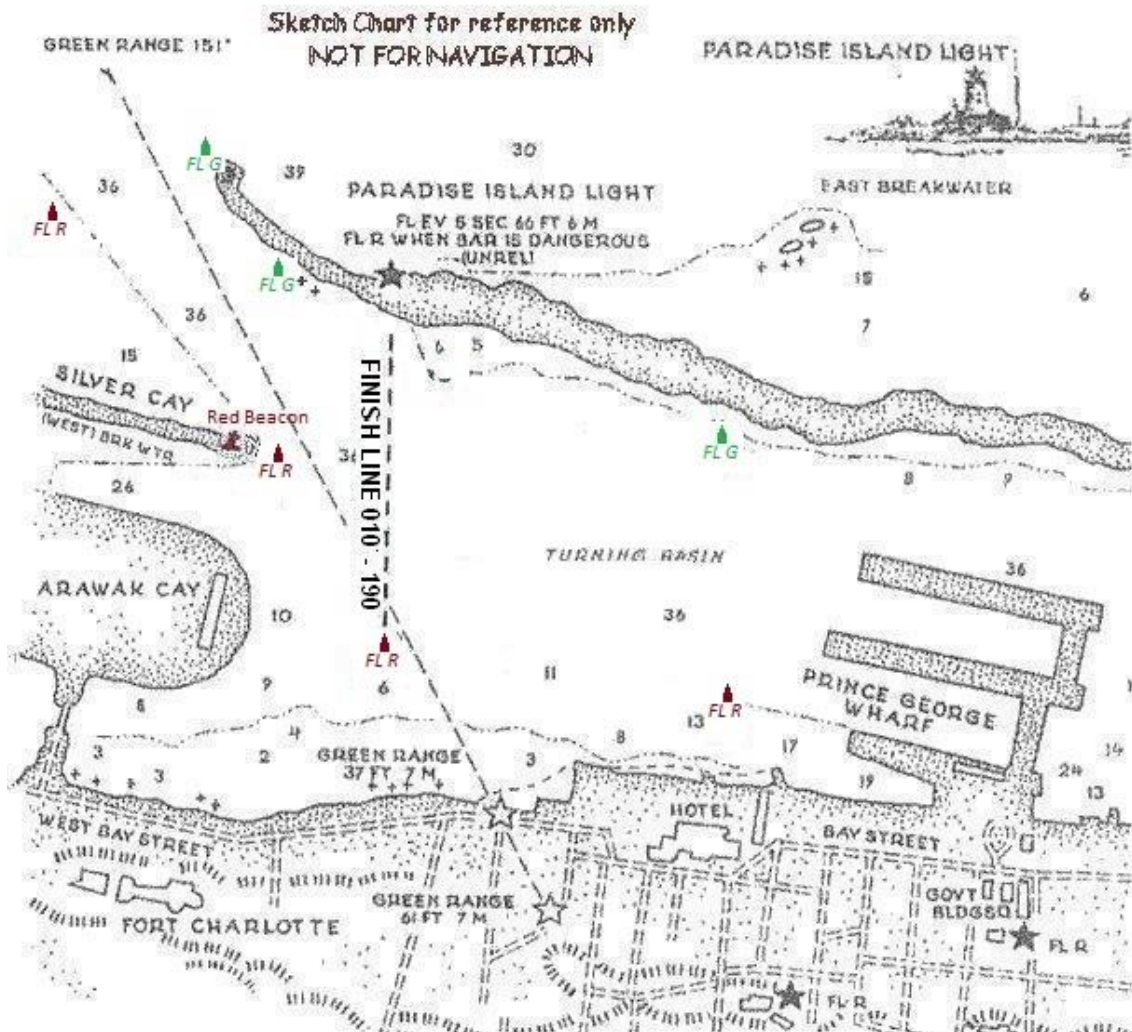
In Nassau – Race Headquarters

Nassau Yacht Club
East Bay Street
Nassau, Bahamas
Phone: 242-393-5366 or 242-357-3959



APPENDIX #1 TO THE SAILING INSTRUCTIONS

SKETCH CHART OF NASSAU HARBOUR FINISH LINE



Event Managed by: